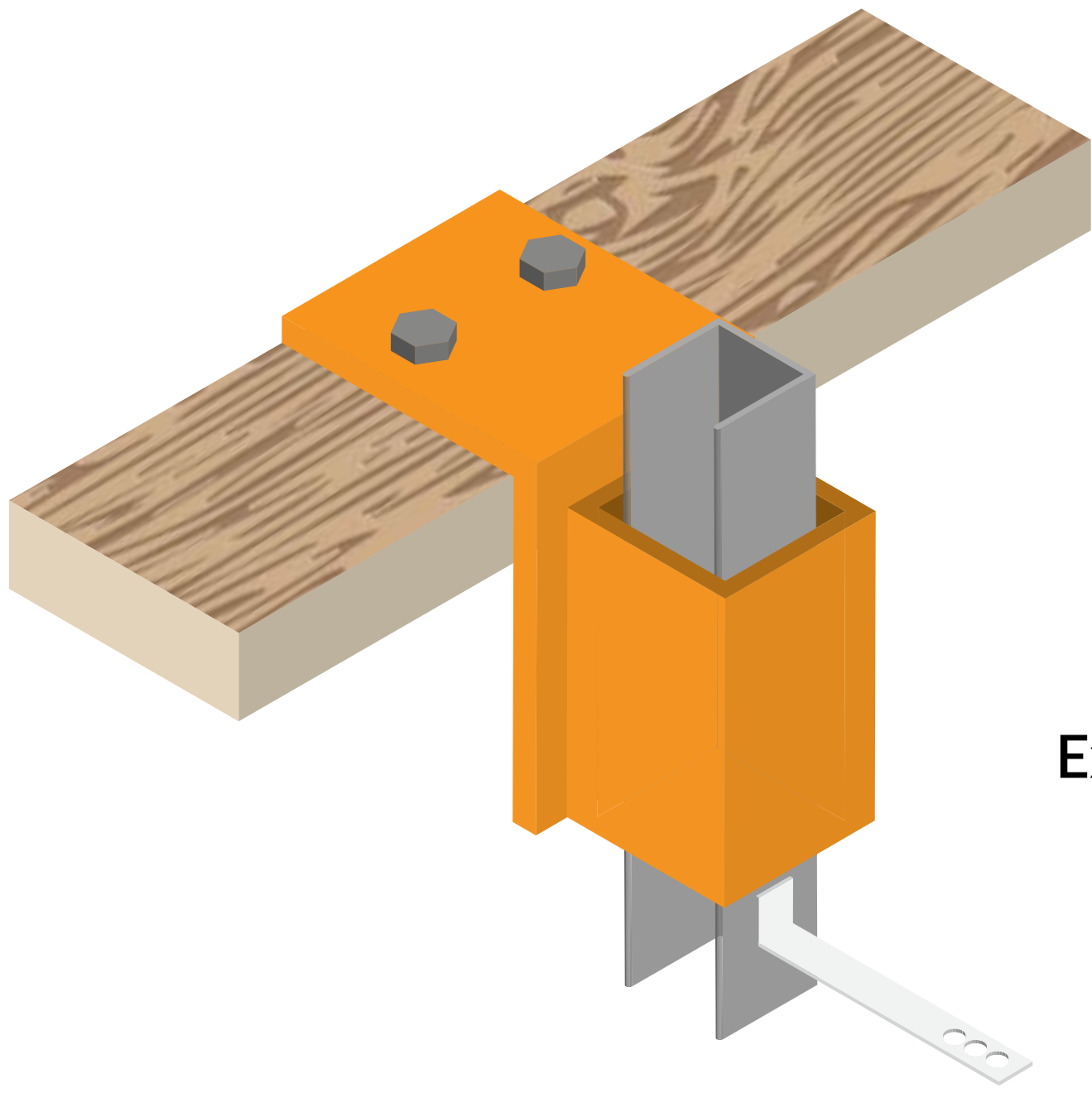


Select top connection

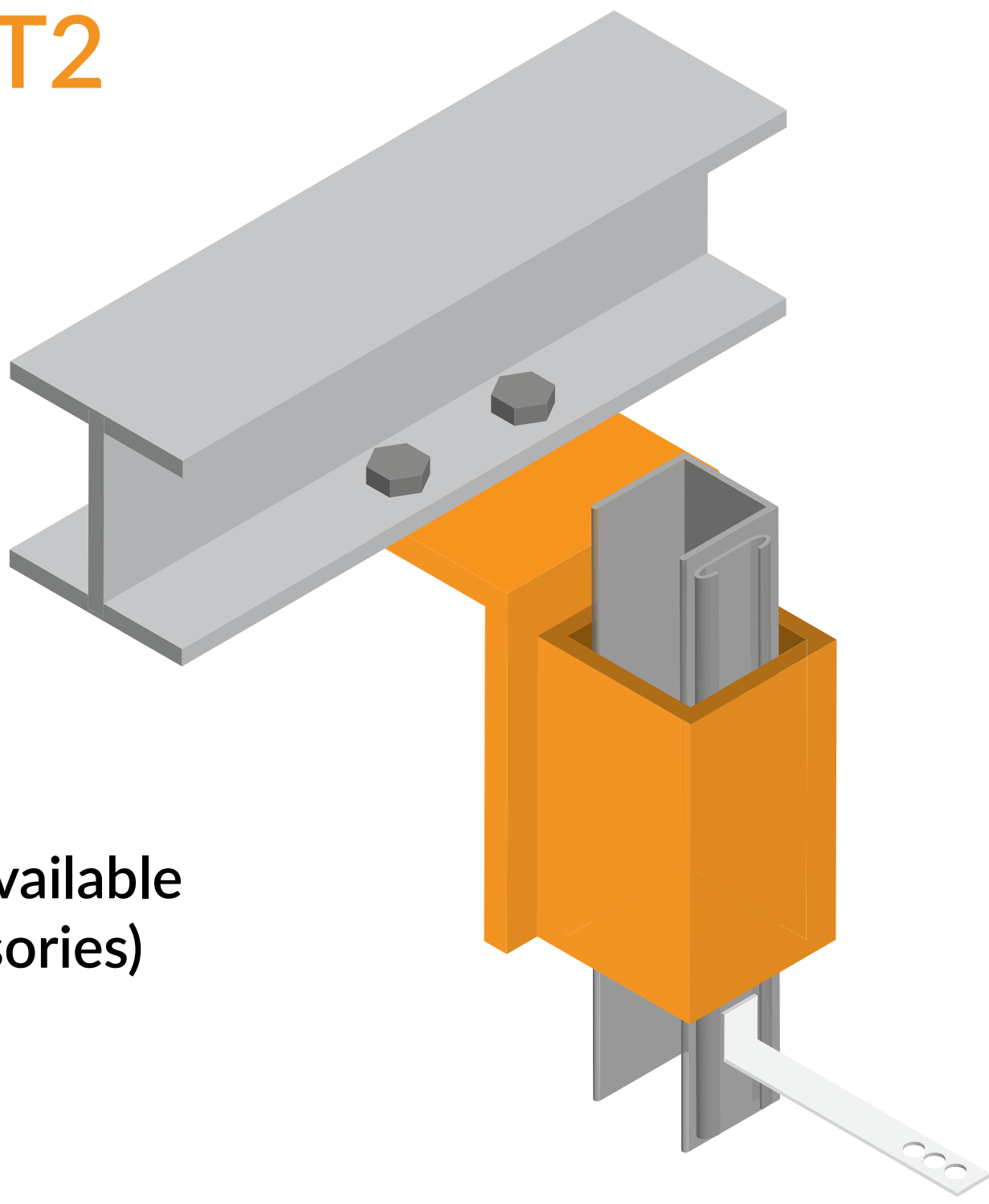
Timber wall plate connection

T1



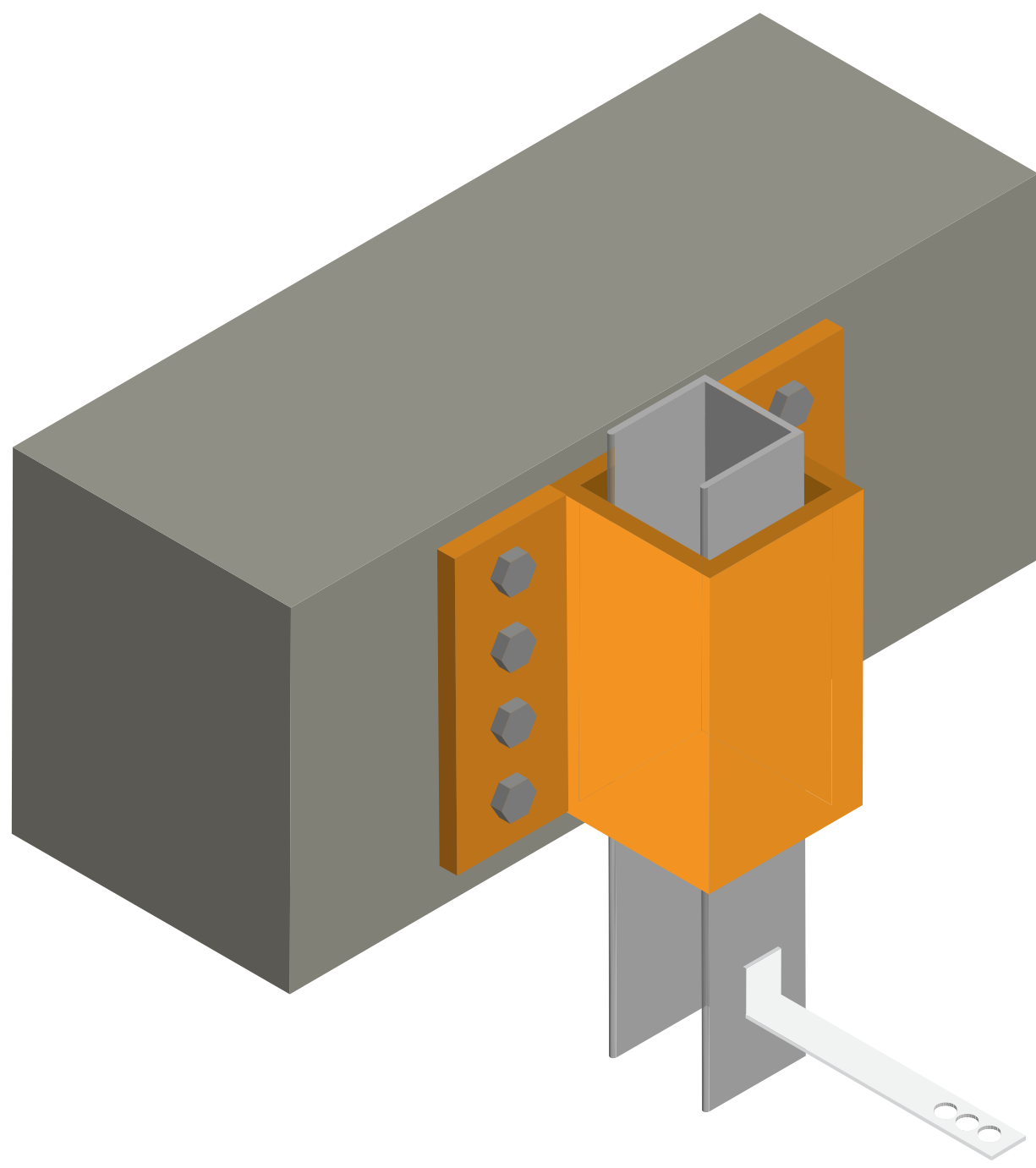
Steel beam connection

T2



Concrete floor connection (side fix)

T3



Extensions available
(see accessories)

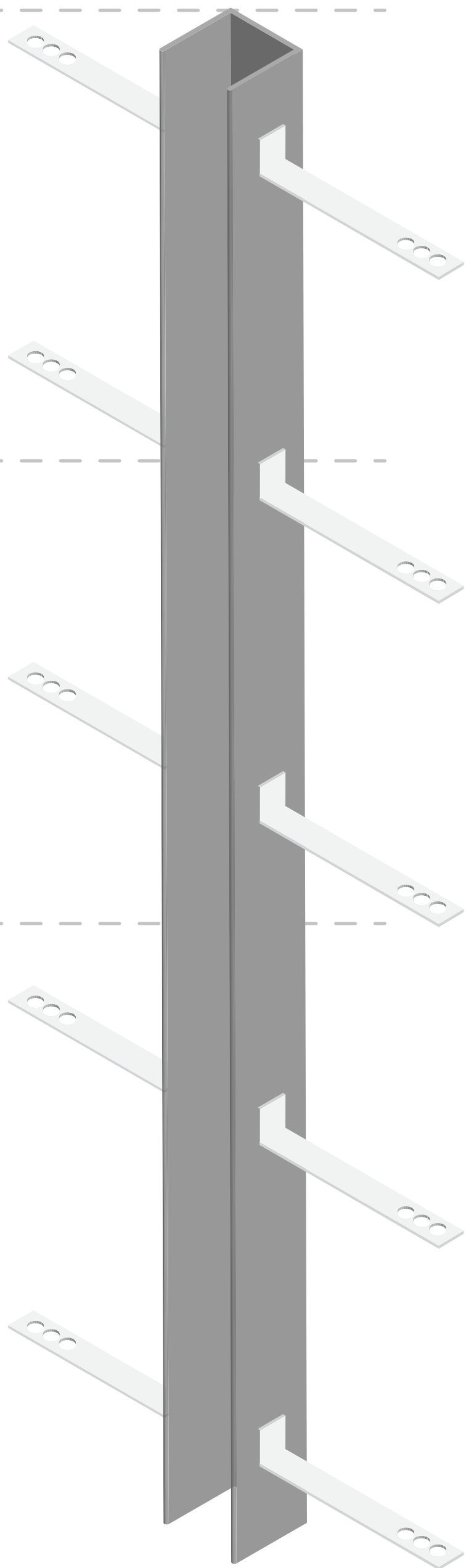
Select stem length

Stem from a WP3
85x60x5 section
Mild Steel and Hot
dip galvanized to
BSEN1461

3500mm

3000mm

2500mm



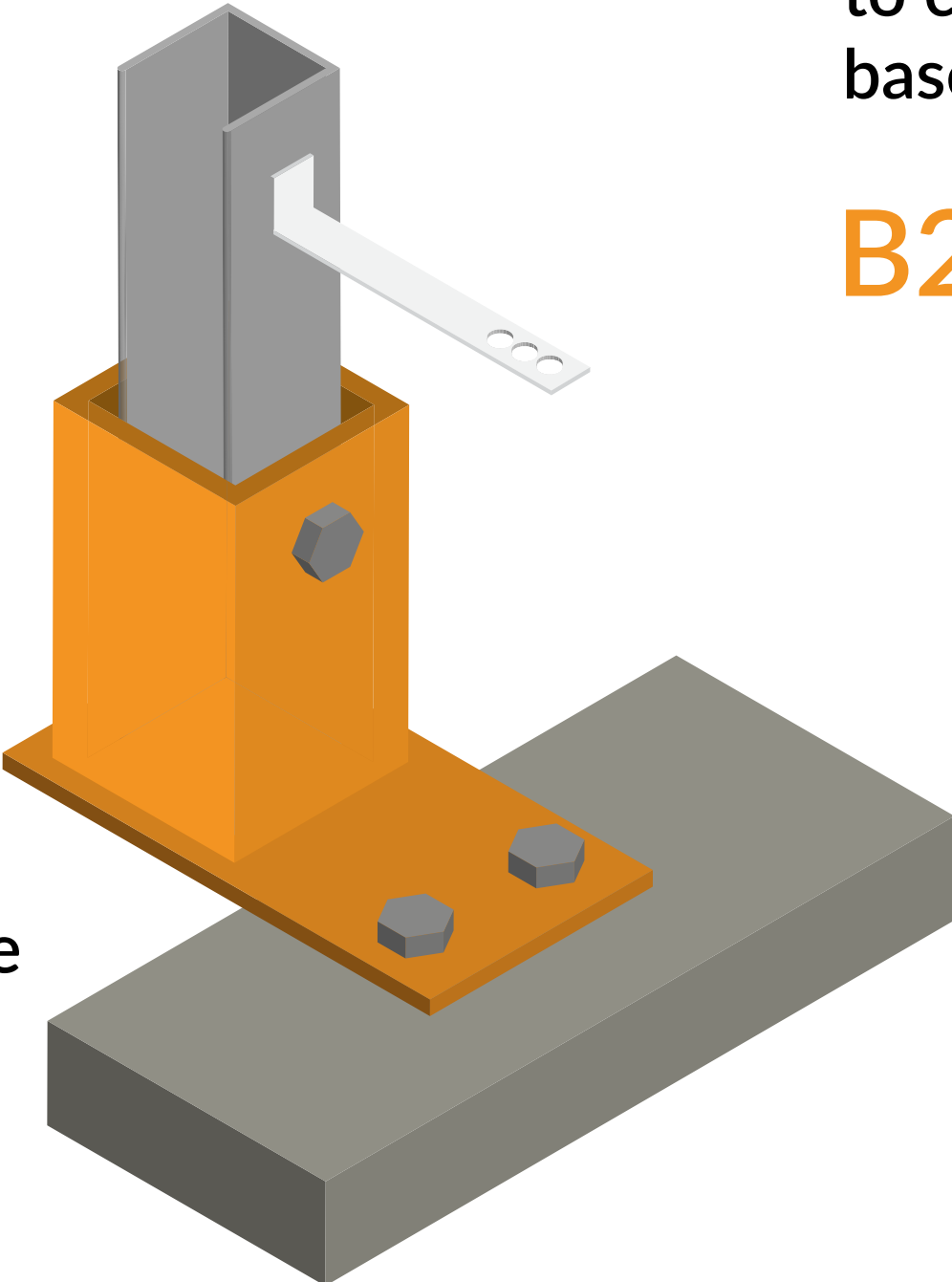
Note: Wall ties tek-screwed to stem
on site, to suit brickwork coursing

Select base connection

Top fix to
concrete
base

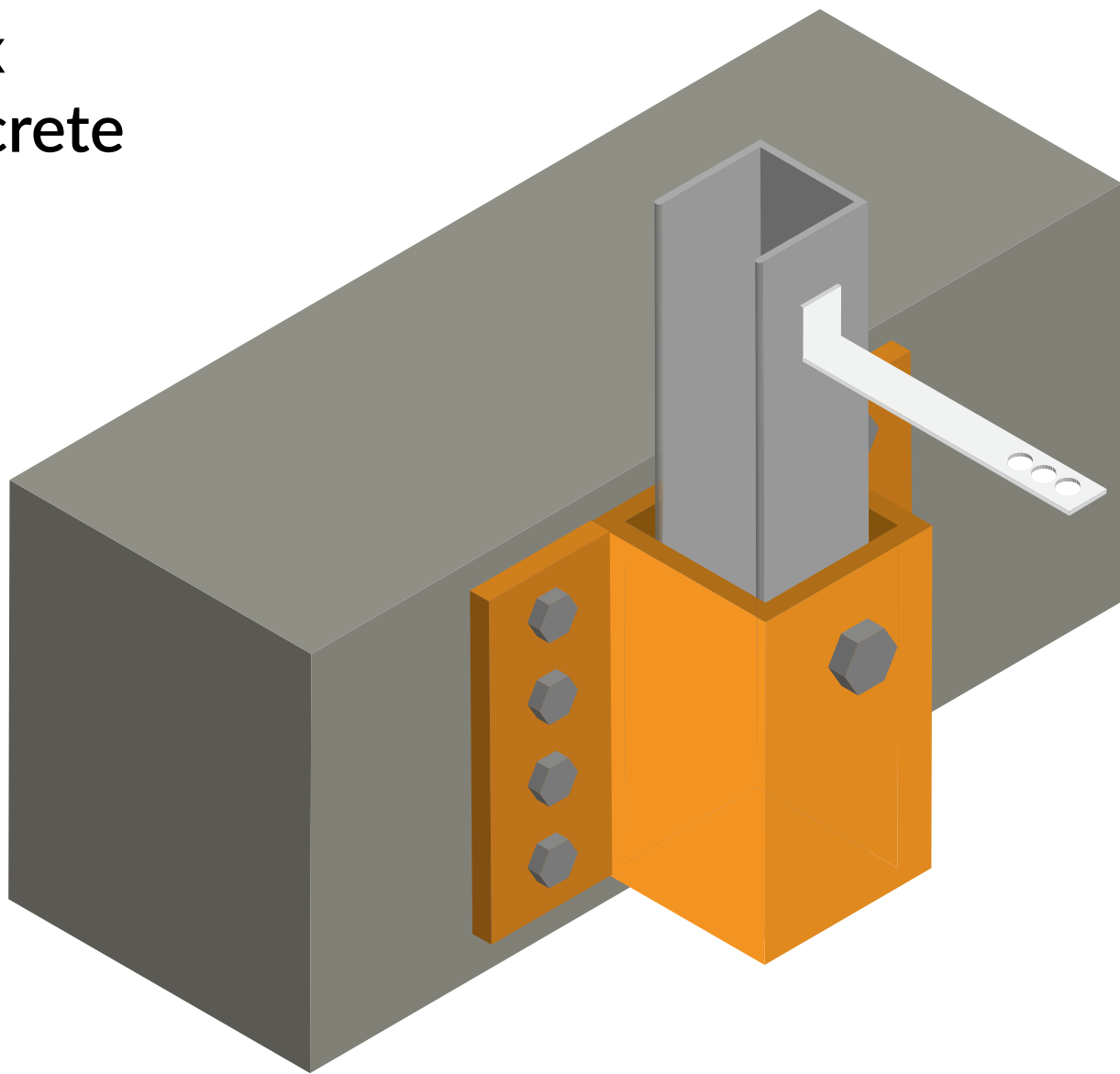
B1

Extensions
available (see
accessories)



Side fix
to concrete
base

B2

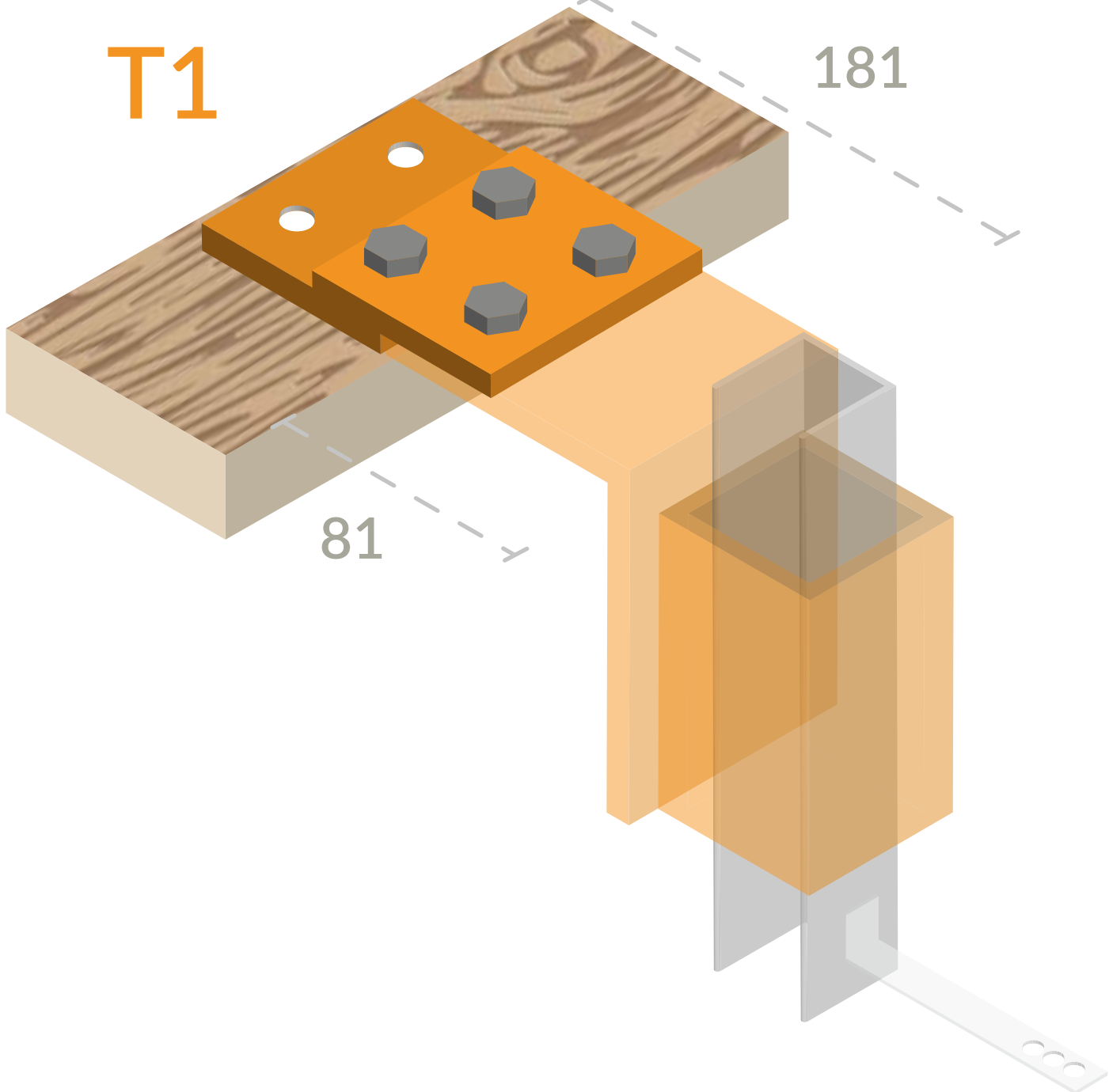


Accessories

Should you need to lengthen the overall dimension of the base plate to T1, T2 or B1 then select a plate extension pack (2 plates per pack & 4no set bolts) which will lengthen the plate with a mechanical bolt fixing by 100m per pack

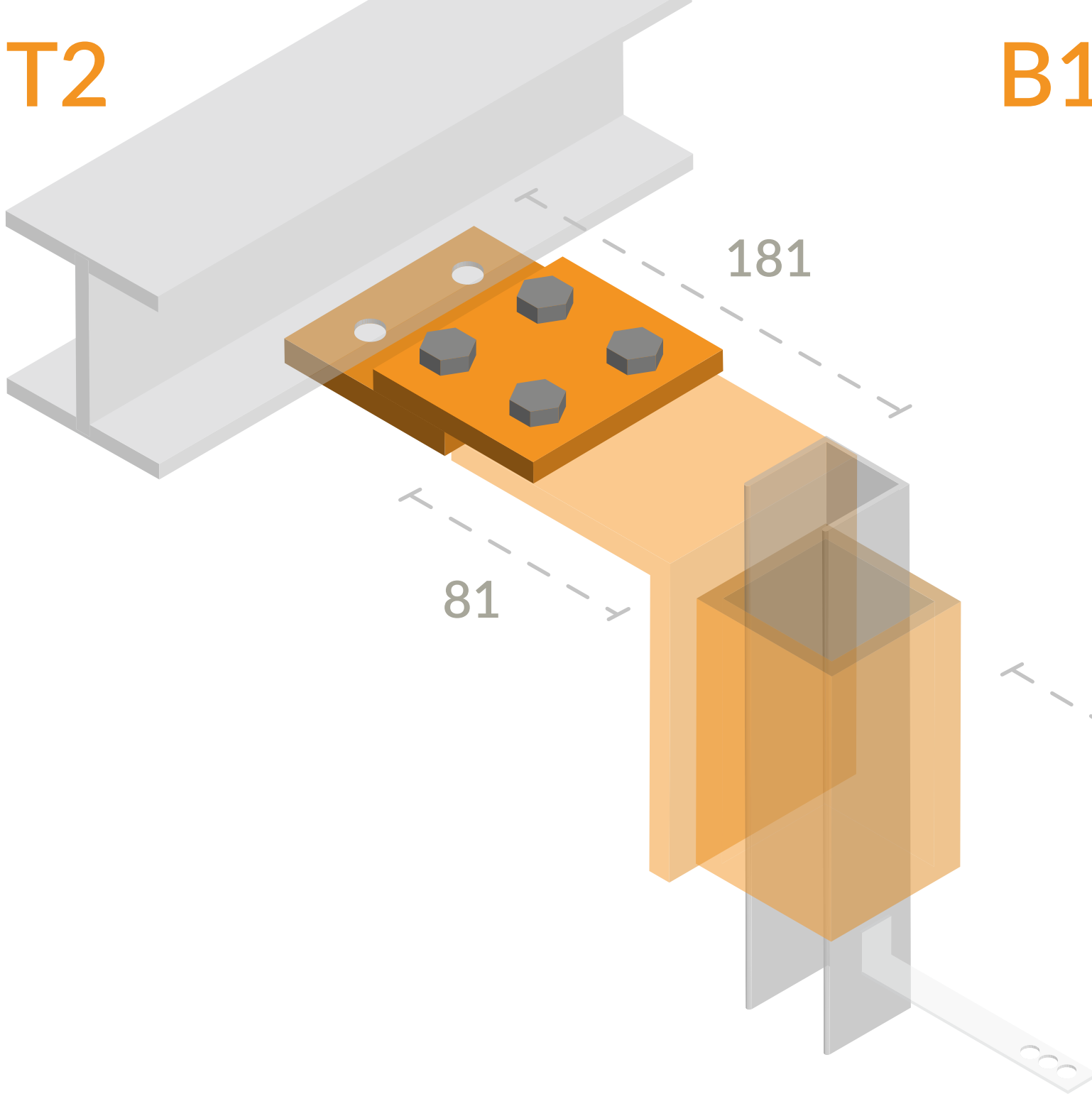
Extension
set for

T1



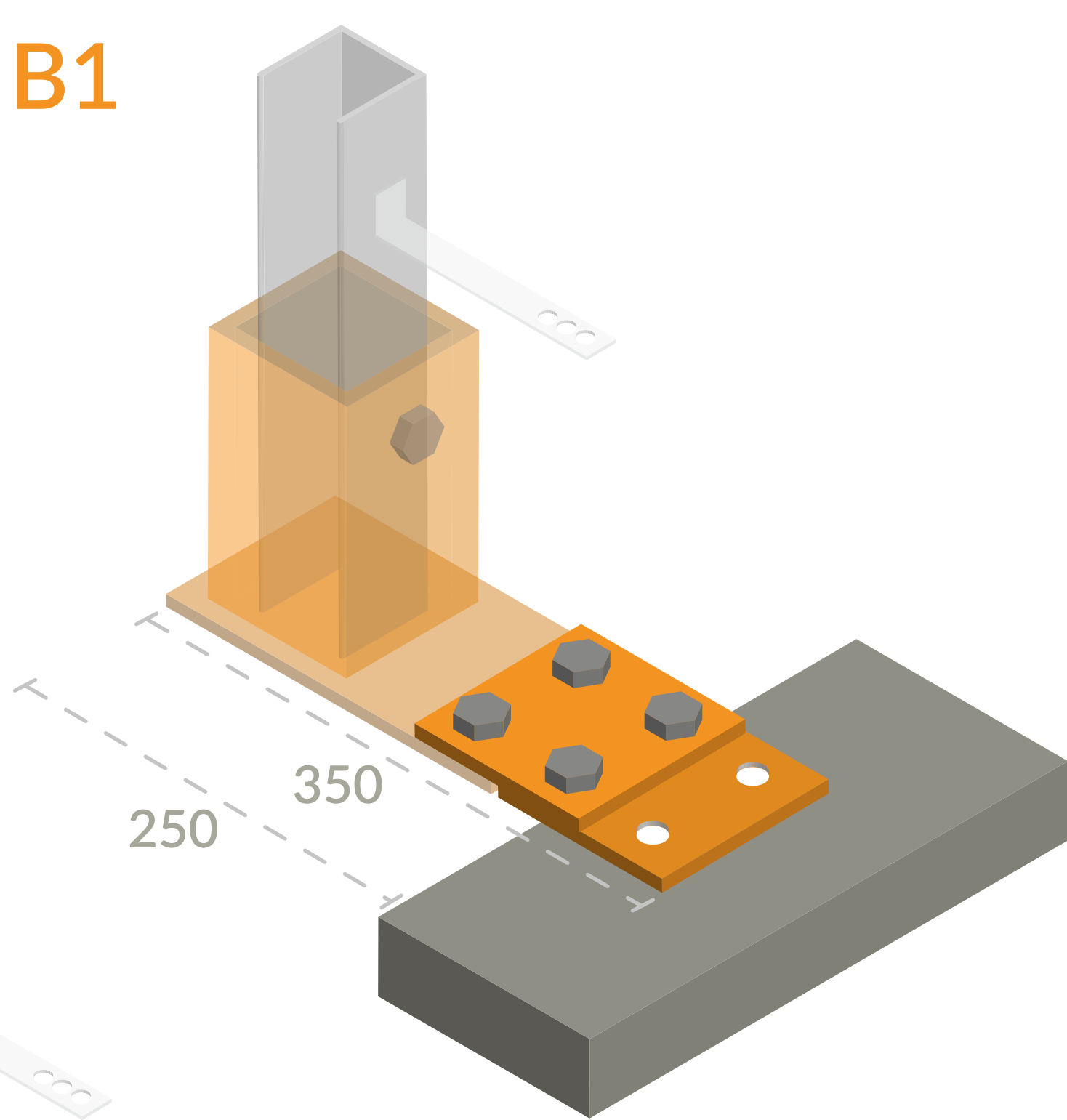
Extension
set for

T2



Extension
set for

B1



Installation

- The top of our **T1,T2,T3** brackets are open;
- 1 Install the base bracket shoe
 - 2 Fit the windpost channel inside the base shoe
 - 3 Build up your masonry wall and install stainless steel wall ties using (using neoprene isolation pad supplied) in to your brickwork coursing
 - 4 Install the top bracket by sliding it over the top of the windpost channel
 - 5 Fix the bracket to the concrete/steel or timber wall plate
 - 6 Cut off the windpost channel on site to be flush with the top bracket (or leave it sailing within the cavity)