



01934 835447
postshoe@albat.co.uk

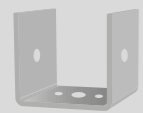
POST SHOE RANGE

GALVANIZED & STAINLESS STEEL



v2.0

RANGES



TYPE 1



TYPE 2



TYPE 3.1



TYPE 3.2



TYPE 4

< GALVANIZED FIXED HEIGHT RANGE (GFH)

Fabricated using 6mm mild steel hot dip galvanised finish

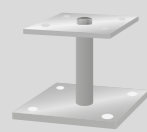
p04

Technical Data

p06



TYPE S2FH



TYPE S4FH

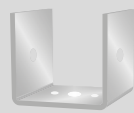
< STAINLESS STEEL FIXED HEIGHT RANGE (SFH)

Heavy duty - made from 6mm grade 304 stainless steel plate

p08

Technical Data

p10



TYPE S1



TYPE S2AH



TYPE S4AH

< STAINLESS STEEL ADJUSTABLE HEIGHT RANGE (SAH)

Heavy duty - made from 6mm grade 304 stainless steel plate

p12

Technical Data

p14



TYPE SCI



TYPE SCIFT

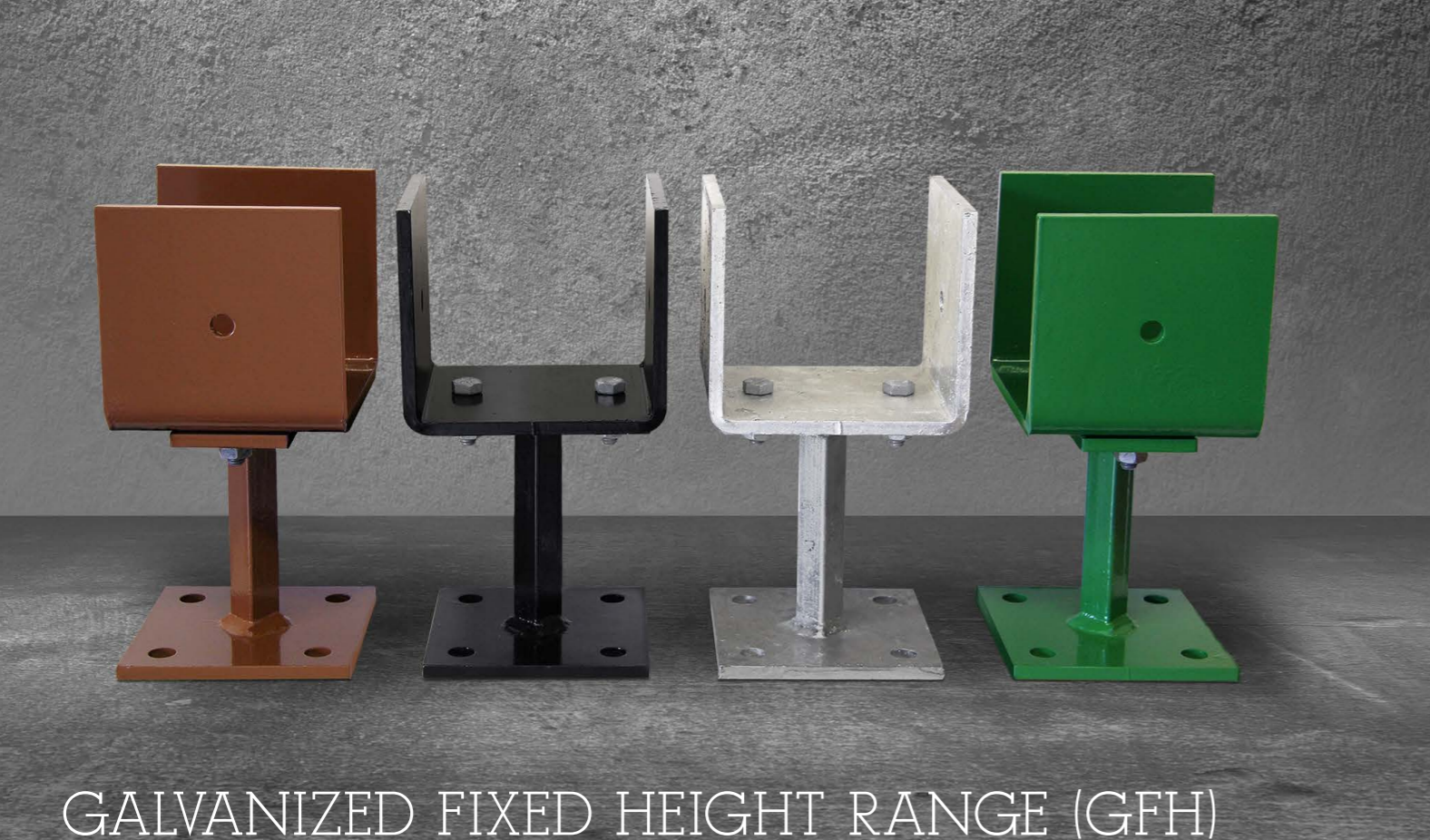
< STAINLESS STEEL CONCRETE IN RANGE (SCI & SCIFT)

Heavy duty - made from 6mm grade 304 stainless steel plate

p16

Technical Data

p18



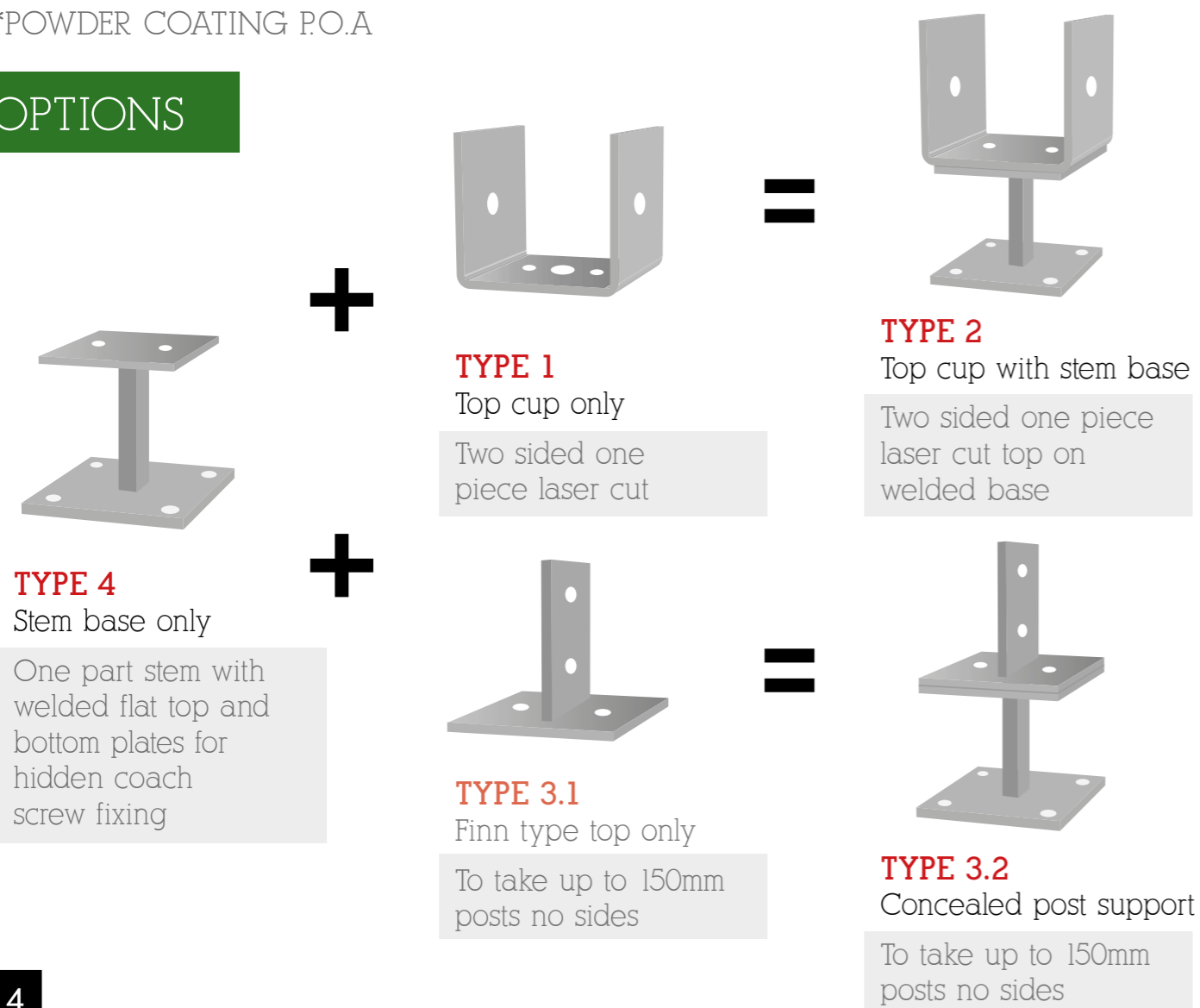
GALVANIZED FIXED HEIGHT RANGE (GFH)

FABRICATED USING 6MM MILD STEEL HOT DIP GALVANISED FINISH

GALVANISED FINISH AS STANDARD

*POWDER COATING P.O.A

OPTIONS



PRICES

Galvanized Fixed Height Range	Description	Weight Kg	Cost Nett + VAT
TYPE 1 Top cup only	To take 100mm post	1.38	£20.50 each
	To take 125mm post	2.19	£21.50 each
	To take 150mm post	3.10	£22.50 each
TYPE 2 Top cup with stem base	To take 100mm post	2.00	£34.50 each
	To take 125mm post	4.00	£35.50 each
	To take 150mm post	4.00	£36.50 each
TYPE 3.1 100mm Finn type top only	Type 3.1 Universal	0.71	£21.50 each
TYPE 3.2 Concealed post support	Type 3.2 Universal	1.61	£35.50 each
TYPE 4 Stem base only	Post size range 100,125,150mm	0.90	£21.50 each

CARRIAGE

To mainland England and Wales up to 20kg = £20.00

then plus £0.50 per kg (all prices + VAT)

Carriage example: 30kg = £25.00 50kg = £35.00

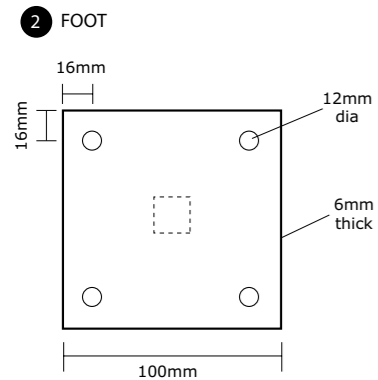
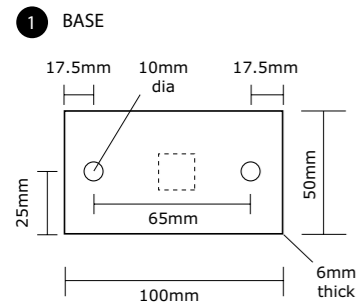
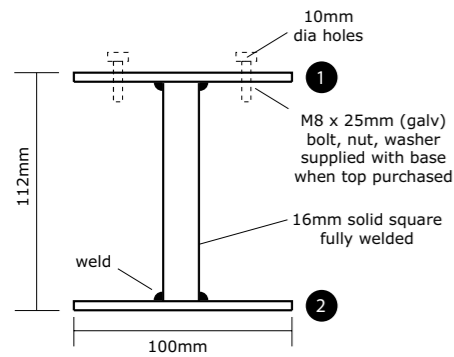
Scotland, Ireland, Channel Islands price on application

[CLICK HERE for technical data sheet >](#)

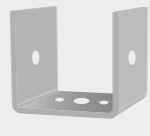
TECHNICAL DATA

GALVANIZED FIXED HEIGHT RANGE (GFH) FABRICATED USING 6MM MILD STEEL HOT DIP GALVANISED FINISH

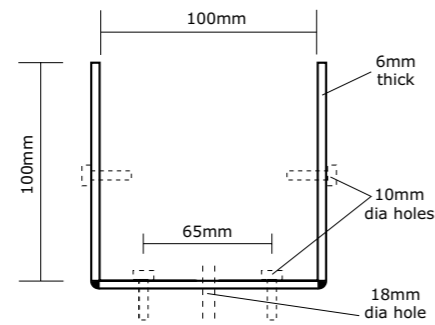
TYPE 4 Stem base only



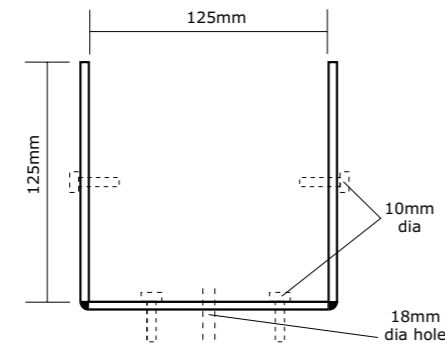
TYPE 1 Top cup only



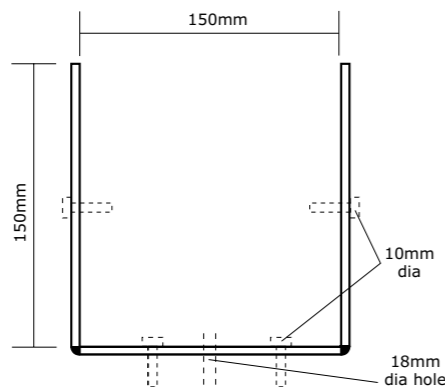
To take 100mm Timber post



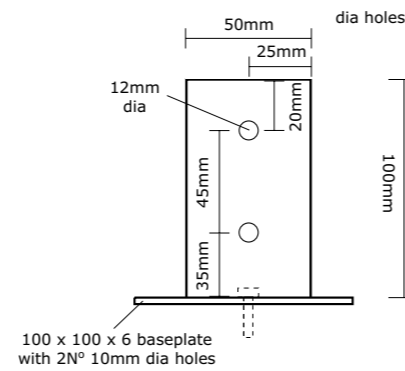
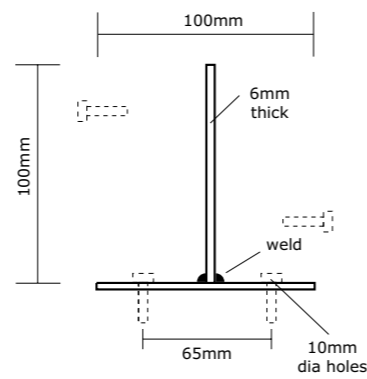
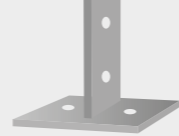
To take 125mm Timber post



To take 150mm Timber post



TYPE 3.1 100mm Finn type top only

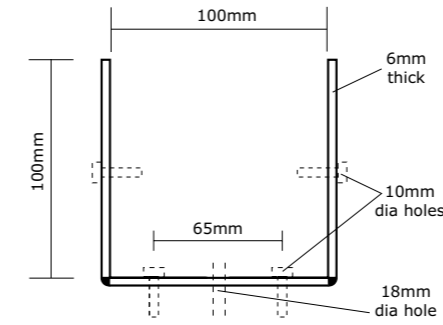


TYPE 2

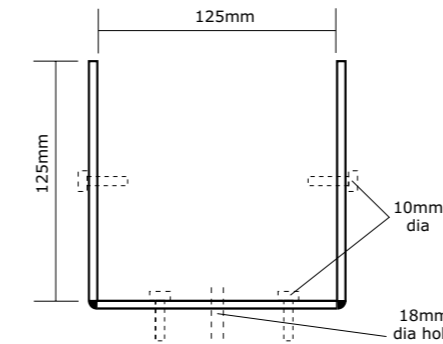
Top cup with
stem base



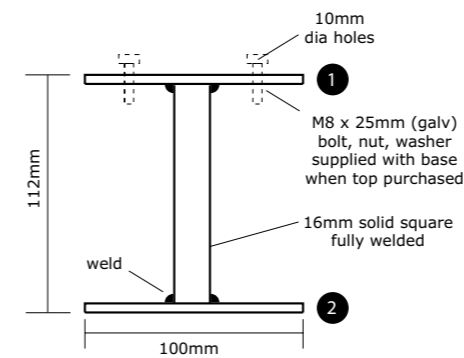
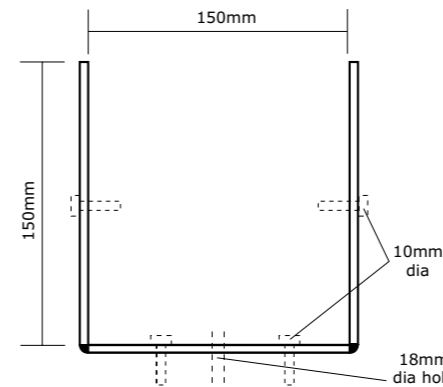
To take 100mm Timber post



To take 125mm Timber post

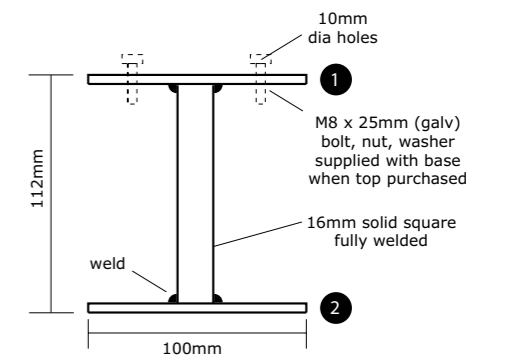
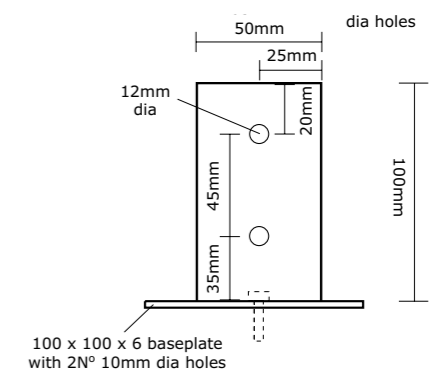
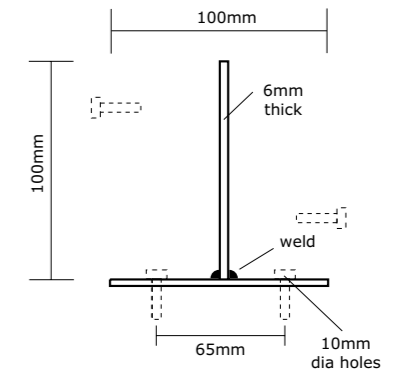


To take 150mm Timber post



TYPE 3.2

Concealed
post support





STAINLESS STEEL FIXED HEIGHT RANGE (SFH)
HEAVY DUTY - MADE FROM 6MM GRADE 304 STAINLESS STEEL PLATE

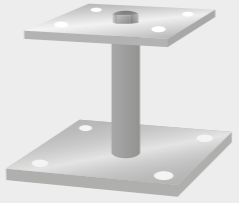

OPTIONS



TYPE S4FH
Fixed height flat top

TYPE S2FH
Fixed height with top cup

PRICES

Stainless Steel Fixed Height Range	Description	Weight Kg	Cost + VAT
TYPE S4FH Fixed height flat top		75mm x 75mm base 75mm x 75mm top	0.79 £26.40 each
		100mm x 100mm base 75mm x 75mm top	0.98 £29.66 each
		100mm x 100mm base 100mm x 100mm top	1.19 £33.52 each
		150mm x 150mm base 100mm x 100mm top	1.77 £43.80 each
		150mm x 150mm base 150mm x 150mm top	2.37 £57.41 each
TYPE S2FH Fixed height with top cup		100mm x 100mm base 100mm top cup	2.07 £48.33 each
		100mm x 100mm base 125mm top cup	2.84 £66.19 each
		100mm x 100mm base 150mm top cup	3.79 £79.27 each
		150mm x 150mm base 100mm top cup	2.64 £58.60 each
		150mm x 150mm base 125mm top cup	3.41 £89.54 each
		150mm x 150mm base 150mm top cup	4.36 £89.54 each

CARRIAGE

To mainland England and Wales up to 20kg = £20.00
then plus £0.50 per kg (all prices + VAT)
Carriage example: 30kg = £25.00 50kg = £35.00
Scotland, Ireland, Channel Islands price on application

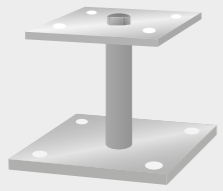
[CLICK HERE](#)
for technical data sheet >

TECHNICAL DATA

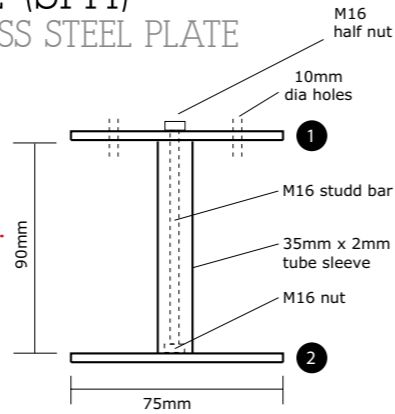
STAINLESS STEEL FIXED HEIGHT RANGE (SFH) HEAVY DUTY - MADE FROM 6MM GRADE 304 STAINLESS STEEL PLATE

TYPE S4FH

Fixed height
flat top



90mm standard
(any height available P.O.A)

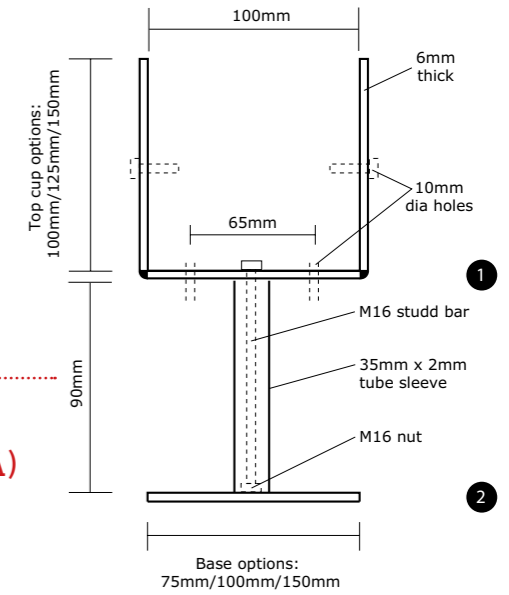


TYPE S2FH

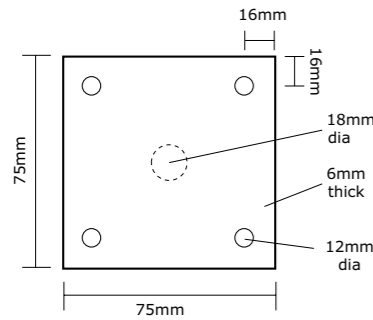
Fixed height
with top cup



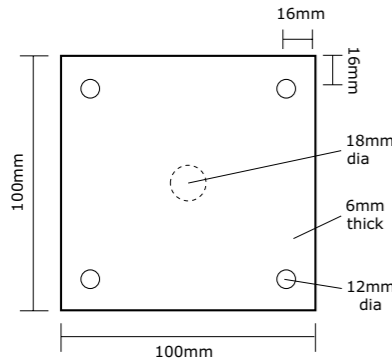
90mm standard
(any height available P.O.A)



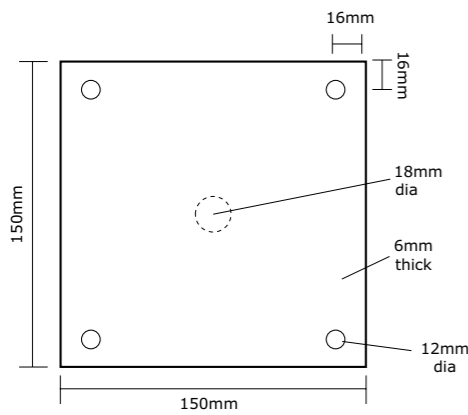
1 TOP OPTIONS



75mm base
top

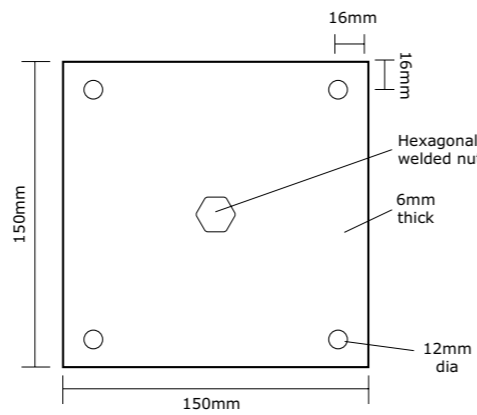
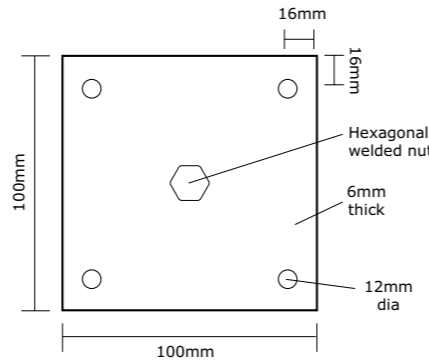
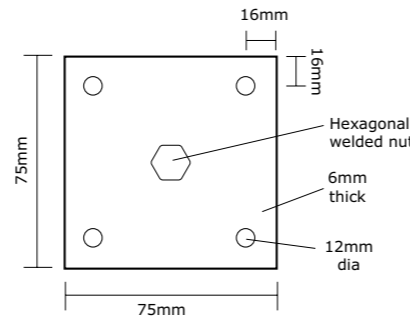


100mm base
top

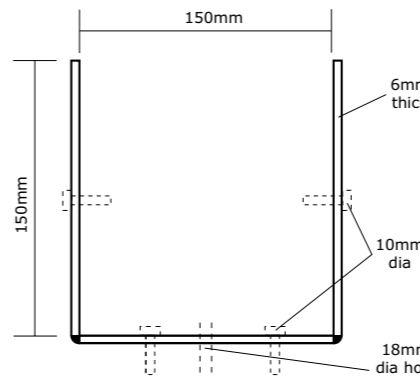
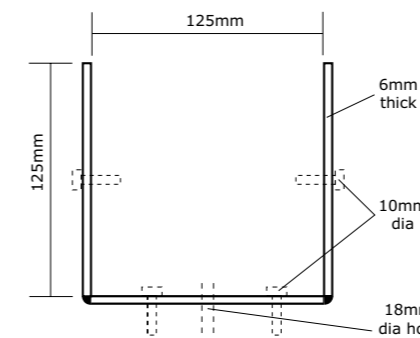
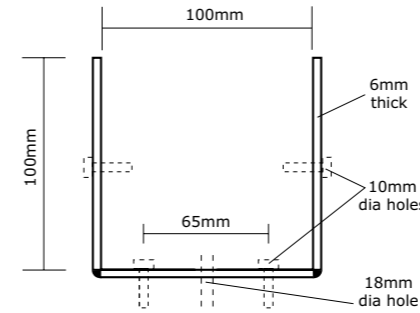


150mm base
top

2 BASE OPTIONS



1 CUP FRONT VIEW OPTIONS

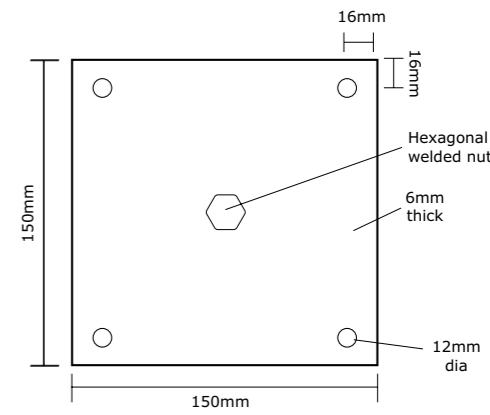
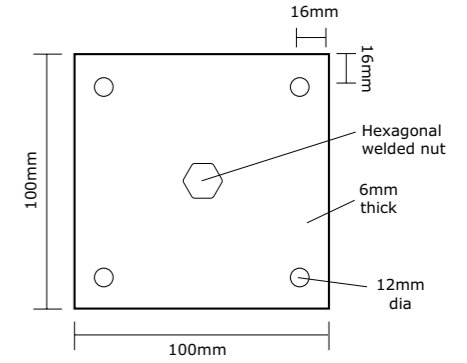
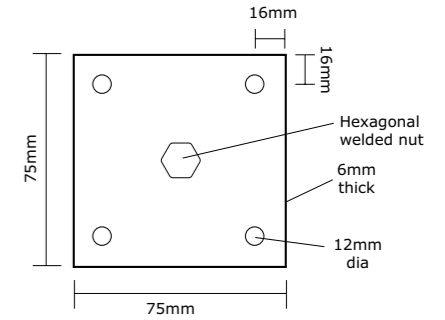


To take
100mm
timber post

To take
125mm
timber post

To take
150mm
timber post

2 BASE OPTIONS



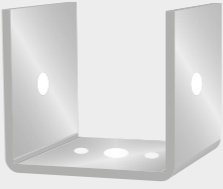
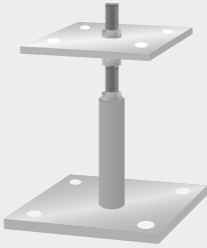

*Any top and base option can be used

*Any cup and base option can be used

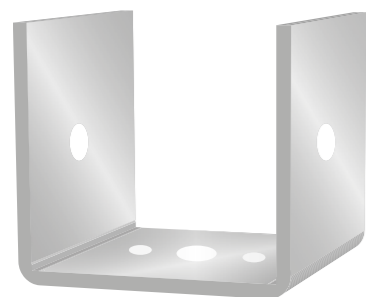


STAINLESS STEEL ADJUSTABLE HEIGHT RANGE (SAH)
 HEAVY DUTY - MADE FROM 6MM GRADE 304 STAINLESS STEEL PLATE

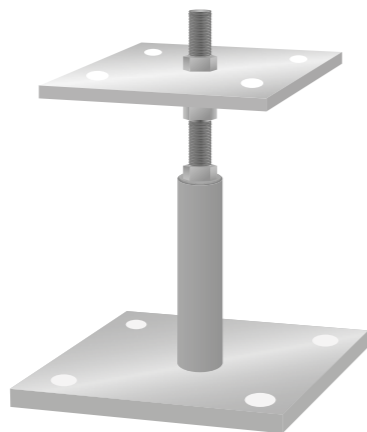
PRICES

Stainless Steel Adjustable Height Range	Description	Weight Kg	Cost Nett + VAT
TYPE S1 Cup top only		100mm Top Cup	1.31 £24.00 each
		125mm Top Cup	2.09 £37.76 each
		150mm Top Cup	3.04 £54.67 each
TYPE S4AH Adjustable height flat top supports		75mm top 100mm base	1.19 £32.27 each
		100mm top 100mm base	1.40 £36.39 each
		100mm top 150mm base	1.97 £46.67 each
		150mm top 150mm base	2.56 £57.58 each
TYPE S2AH Adjustable height 2 sided cup shoes		100mm top cup 100mm base	2.27 £51.80 each
		150mm top cup 100mm base	3.99 £83.82 each
		100mm top cup 150mm base	2.84 £62.07 each
		150mm top cup 150mm base	4.56 £92.74 each

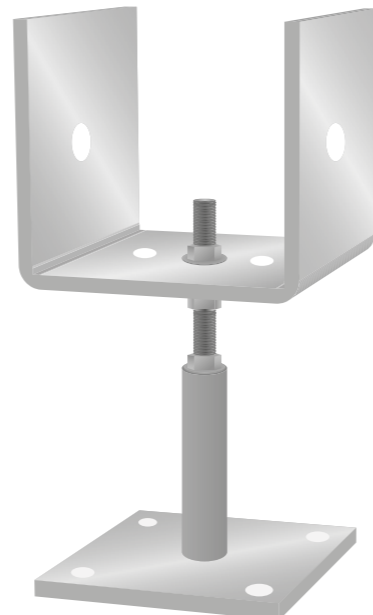
OPTIONS



TYPE S1
Cup top only



TYPE S4AH
Adjustable height flat top supports



TYPE S2AH
Adjustable height 2 sided cup shoes

CARRIAGE

To mainland England and Wales up to 20kg = £20.00 then plus £0.50 per kg (all prices + VAT)
 Carriage example: 30kg = £25.00 50kg = £35.00
 Scotland, Ireland, Channel Islands price on application

[CLICK HERE for technical data sheet >](#)

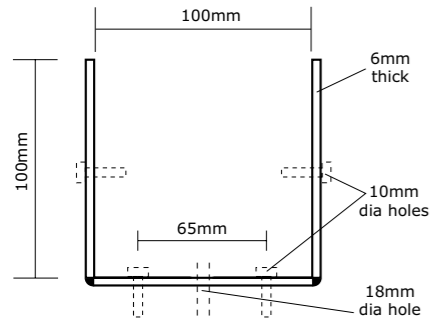
TECHNICAL DATA

STAINLESS STEEL ADJUSTABLE HEIGHT RANGE (SAH) HEAVY DUTY - MADE FROM 6MM GRADE 304 STAINLESS STEEL PLATE

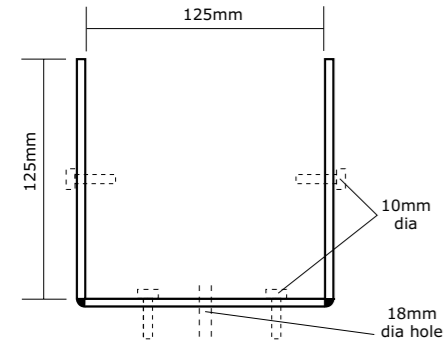
TYPE S1 Cup top only



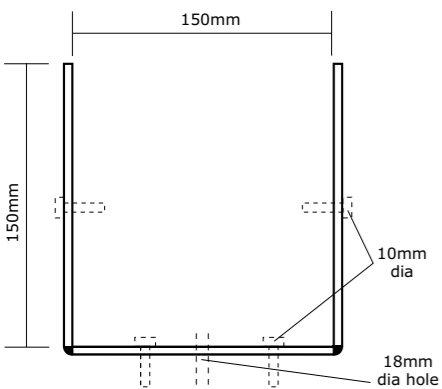
To take 100mm Timber post



To take 125mm Timber post



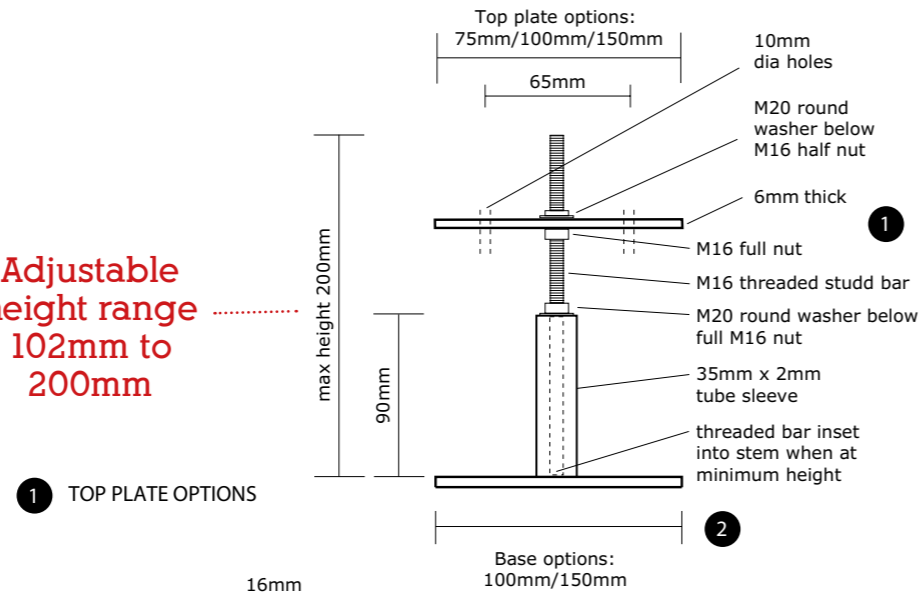
To take 150mm Timber post



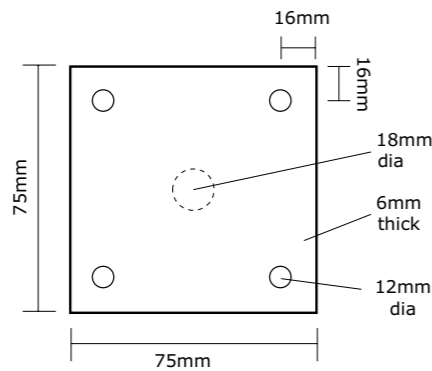
TYPE S4AH Adjustable height flat top supports



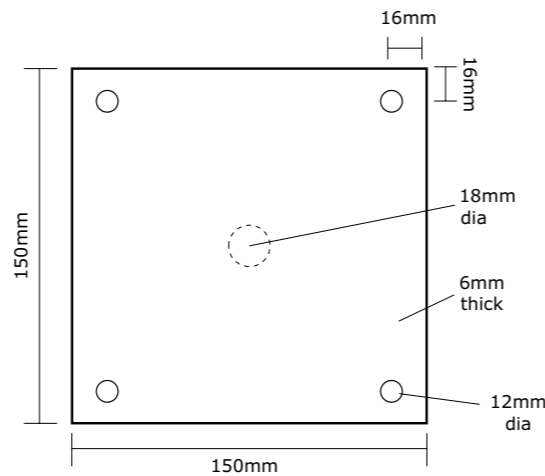
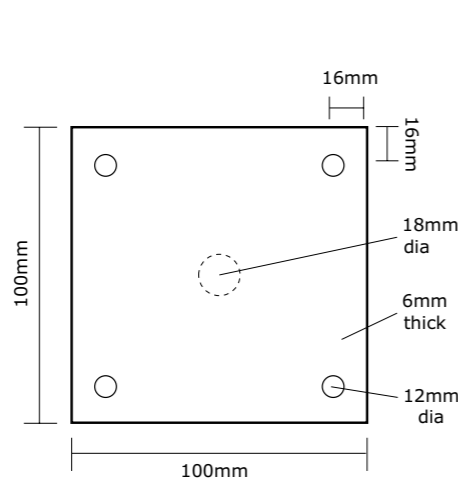
Adjustable height range
102mm to 200mm



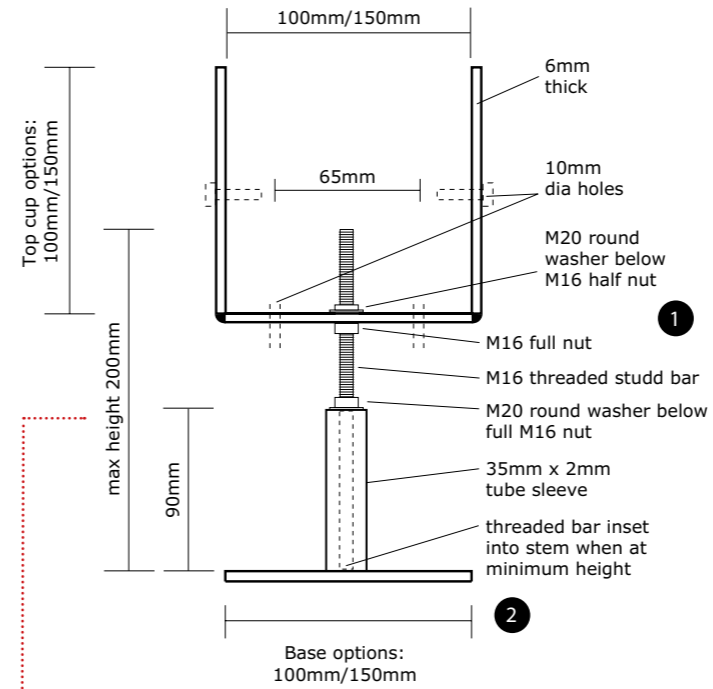
1 TOP PLATE OPTIONS



2 FOR S4AH BASE OPTIONS
SEE OPPOSITE

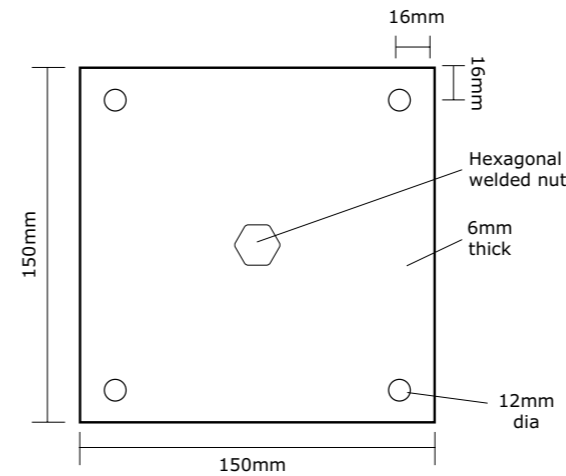
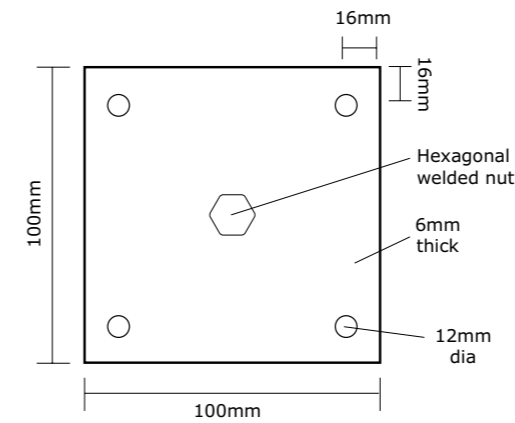


TYPE S2AH Adjustable height 2 sided cup shoes

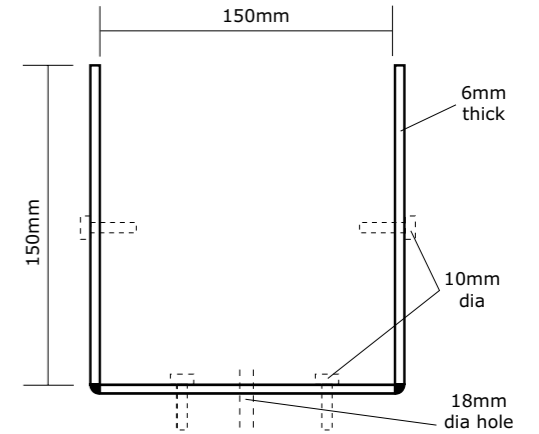
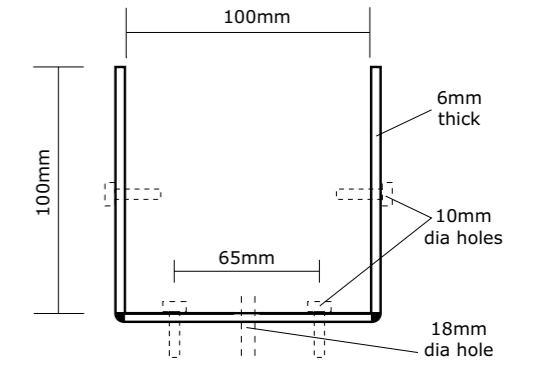


Adjustable height range 102mm to 200mm

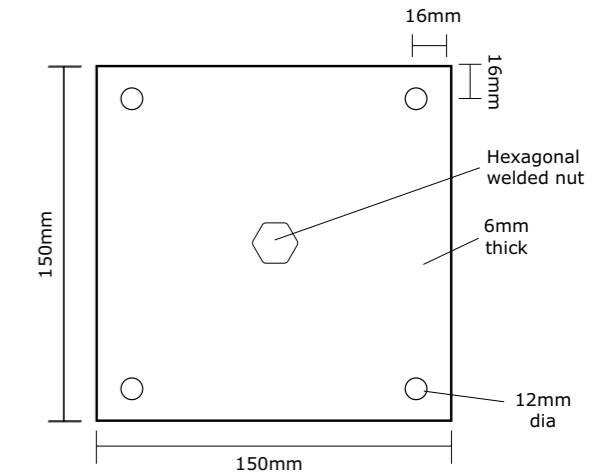
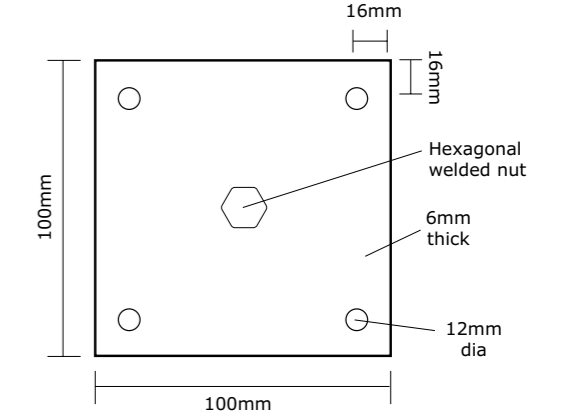
2 S4AH BASE OPTIONS



1 CUP FRONT VIEW OPTIONS



2 BASE OPTIONS





STAINLESS STEEL CONCRETE IN RANGE (SCI & SCIFT)
 HEAVY DUTY - MADE FROM 6MM GRADE 304 STAINLESS STEEL PLATE

OPTIONS



TYPE SCI
 Top cup and stem



TYPE SCIFT
 Flat top and stem

PRICES

Stainless Steel Concrete in Range	Description	Weight Kg	Cost Nett + VAT
TYPE SCI Top cup and stem	100mm top cup and stem	1.98	£38.68 each
	125mm top cup and stem	2.75	£69.35 each
	150mm top cup and stem	3.70	£69.35 each
TYPE SCIFT Flat top and stem	75mm flat top and stem	0.89	£26.57 each
	100mm flat top and stem	1.10	£29.83 each
	150mm flat top and stem	1.69	£40.11 each

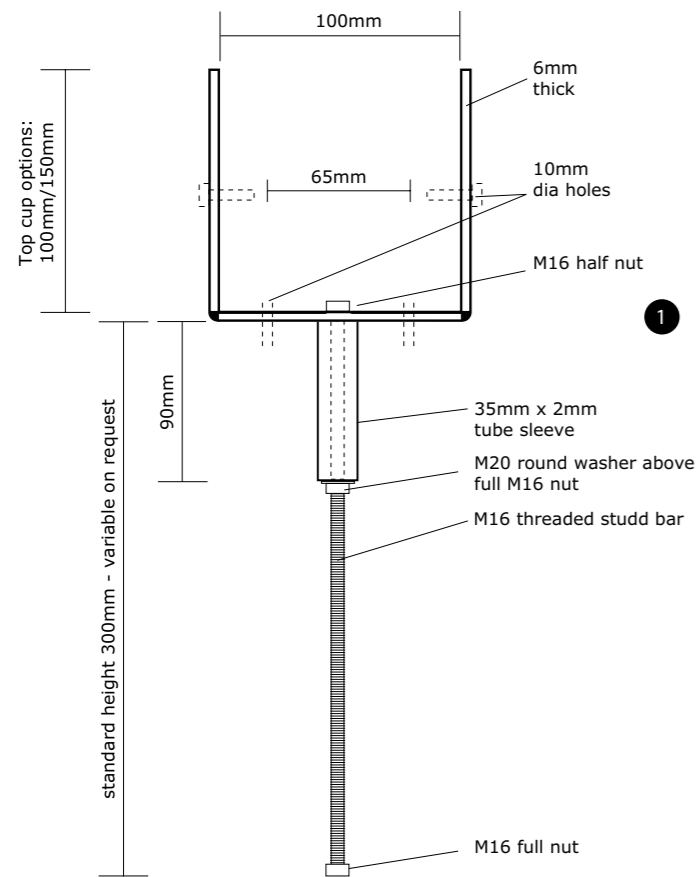
CARRIAGE

To mainland England and Wales up to 20kg = £20.00
 then plus £0.50 per kg (all prices + VAT)
 Carriage example: 30kg = £25.00 50kg = £35.00
 Scotland, Ireland, Channel Islands price on application

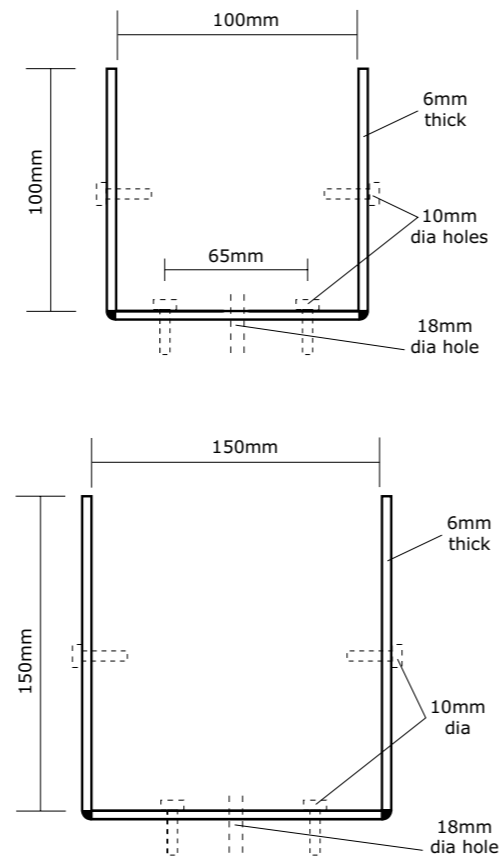
[CLICK HERE
 for technical data sheet >](#)

STAINLESS STEEL CONCRETE IN RANGE (SCI & SCIFT) HEAVY DUTY - MADE FROM 6MM GRADE 304 STAINLESS STEEL PLATE

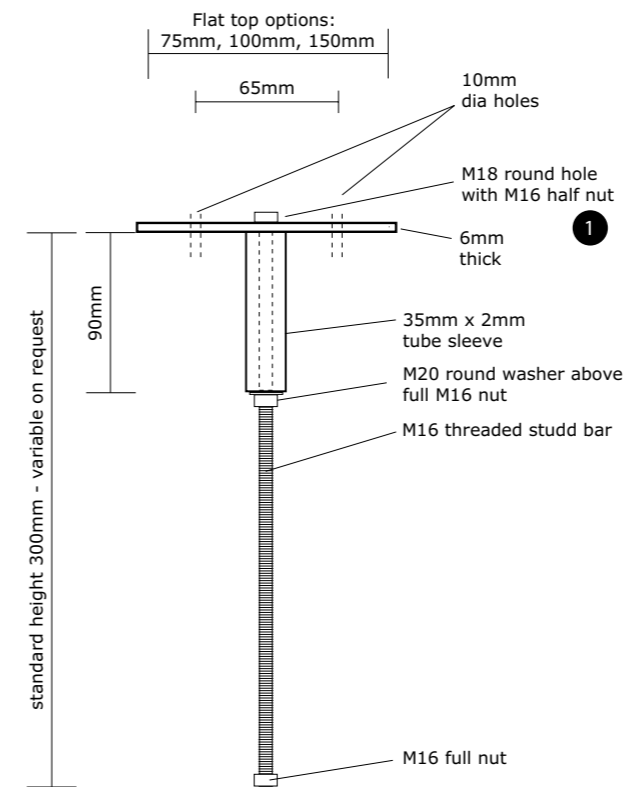
TYPE SCI Top cup and stem



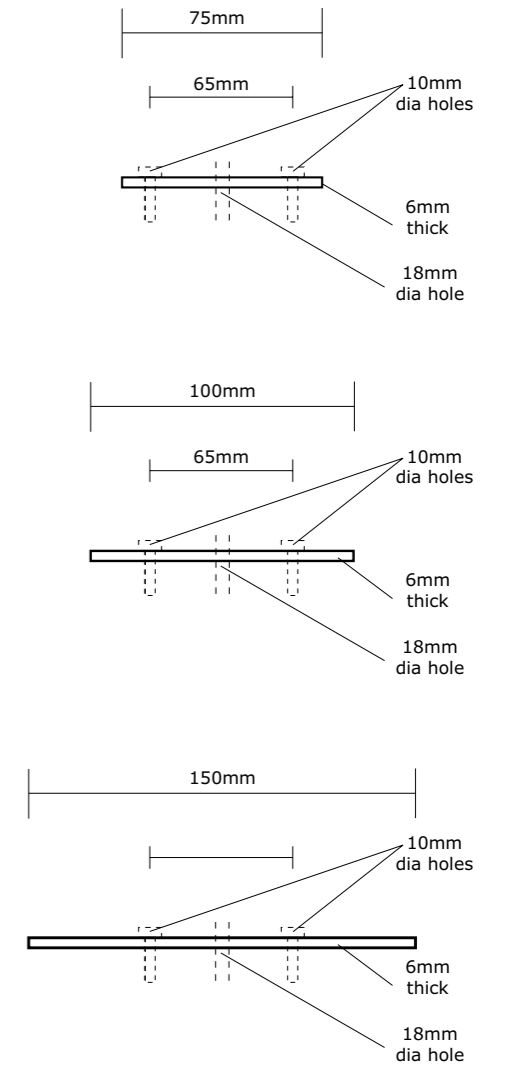
1 CUP FRONT VIEW OPTIONS



TYPE SCIFT Flat top and stem



1 FLAT TOP OPTIONS



BATAVON STEELWORK

T 01934 835447 **F** 01934 834657 **E** postshoe@albat.co.uk **W** www.albat.co.uk
Weeping Ash Farm, North End Road, Yatton, North Somerset, BS49 4AW

BATAVON STEELWORK is a trading name for AL Lintels (Batavon) Ltd
Registered in Wales No. 02173261